



Instructions for Colonel Electric Label Gluer

Remove the packing materials and carefully remove the gluer from the wooden crate. It is strongly recommended that you apply some 30 weight oil to the two slots that hold the Top Feed Roller (#10) and the oil hole located in the Flywheel Collar (#38) which lubricates the Eccentric Shaft (#30). This will help keep the Flywheel (#29) from seizing up. Do not apply grease into these oil holes!

Your Colonel Electric Label Gluer was shipped to you assembled ready for operation, except for the Brass Finger Rod (Part #18 on the schematic diagram) with the Pick Off Finger & Points. Place the Brass Finger Rod on the Finger Rod Mounting Rod & Supports (#52) located on the left and right of the front of the machine. Make sure that the green Fingers move freely on the rod. The Screws (#17) on the Finger and Point Assemblies (#15 & 16) should be all facing either on the right or left side, depending on the operator's comfort. The sharp point should hit the roller at a sharp angle so that the glued label is neatly peeled from the glue roller. If necessary, draw a pencil line on the glue roller so that the points "meet" the label at the same time.

The Glue Tray (#39), in relationship to the roller, may be adjusted by loosening the Tray Knob (on the left-hand side as you face the rollers) and moving the handle that positions the glue tray. For your initial test, fill glue tray halfway with glue (use Glue-Fast glue or adhesive for best results). The glue tray should then be raised so that the glue comes in full contact with the Glue Pick-up Roller (the bottom roller, #13). Turn on the switch at the left side of the gluer (#35). You can now adjust the glue thickness by turning the Glue Control Knobs (#49,50 & 51). There is one knob on each side of the gluer and they should be adjusted equally to provide an even film of adhesive across the glue roller.

Adjustment of the Pressure Feed Rod (#5) should only be done after the Glue Application Roller (upper glue roller #10) has the correct amount of adhesive. The Pressure Feed Rod is adjusted by loosening the Locking Knob (#6) and turning the outer knob - the Pressure Feed Adjustment Knob (#8). The two grooves on either end of the Pressure Feed Rod should be facing towards the Glue Application Roller. If it is too close to this roller adhesive will be transferred to it. If it is too far away the leading or trailing edge of the label may not be adequately coated with glue.

Photo #3 shows a knob attached to the Motor Speed Control Mounting Plate (#24). By turning this knob so that the motor moves toward the front of the gluer (nearer to the glue rollers) the speed of the rollers will increase. To decrease the speed turn the knob so that the plate moves the motor to the back. However, if you bring it too far back the life of the Drive Belt (#27) will be greatly reduced.

Photo #3 also shows the Hot Water Tray and plug. Use this only for animal glues which are normally heated by placing water in the lower Calrod Heater and Water Tray (#40). The Temperature Control Knob (#36) controls the thermostat. **Caution:** Using the heater without water will burn out the calrod!

The Gluefast Company, Inc.
3535 Route 66, Bldg 1, Neptune, NJ 07753 USA
Phone 732-918-4600 / FAX 732-918-4646 / E-mail: gluers@gluefast.com



Instructions for Colonel Electric Label Gluer

Colonel Setup Video

You can view a video of the some of the main features of setting up the Colonel Gluer at our web site – go to www.gluefast.com/videos and click on Colonel Setup Video, or enter the page as follows: <http://www.gluefast.com/videos/colonel-setup-video.html>.

Cleaning and Maintenance

The gluer should be cleaned at the end of the work day. It is advisable to place newspaper beneath the glue tray *before* removing the glue tray! Rinse the tray thoroughly and fill tray with warm water and replace in gluer. Raise the glue tray into position so that the water is in full contact with the Lower Glue Roller. Turn on the motor and let it run so that the rollers can help clean themselves but *do not clean with a cloth when the motor is turning the glue rollers! If you get a towel stuck between the glue rollers you might ruin the rollers.* You should turn the motor off, remove the Drive Gear Cover (#44) and the drive belt, and move the flywheel by hand to rotate the glue rollers.

Remove any hardened glue on the rollers. Never scrape or scratch the rollers with a knife or sharp object! Dry the rollers with a soft cloth. All moving parts should be lubricated with oil regularly, but do not apply too much which can result in the oil getting into the glue tray and decreasing the efficiency of the gluer.

The Drive Guard Cover (#44) must be removed before any of the geared rollers can be removed. Photo #4 shows the gluer completely disassembled. When cleaning remove the parts in the following order:

- Pick-Off Finger Rod
- Pressure Rod
- Gear Housing Cover
- Top Feed Roller
- Bottom Feed Roller
- Complete Glue Tray (includes upper glue tray and lower water tray)
- Glue Application Roller (turn the Glue Control Knobs counterclockwise completely)
- Glue Pick-Up Roller (loosen knobs on shafts that support pick-off finger rod and swing bottom roller locks counterclockwise.
- When reassembling be sure that all of the units with oil holes have the oil holes facing up.

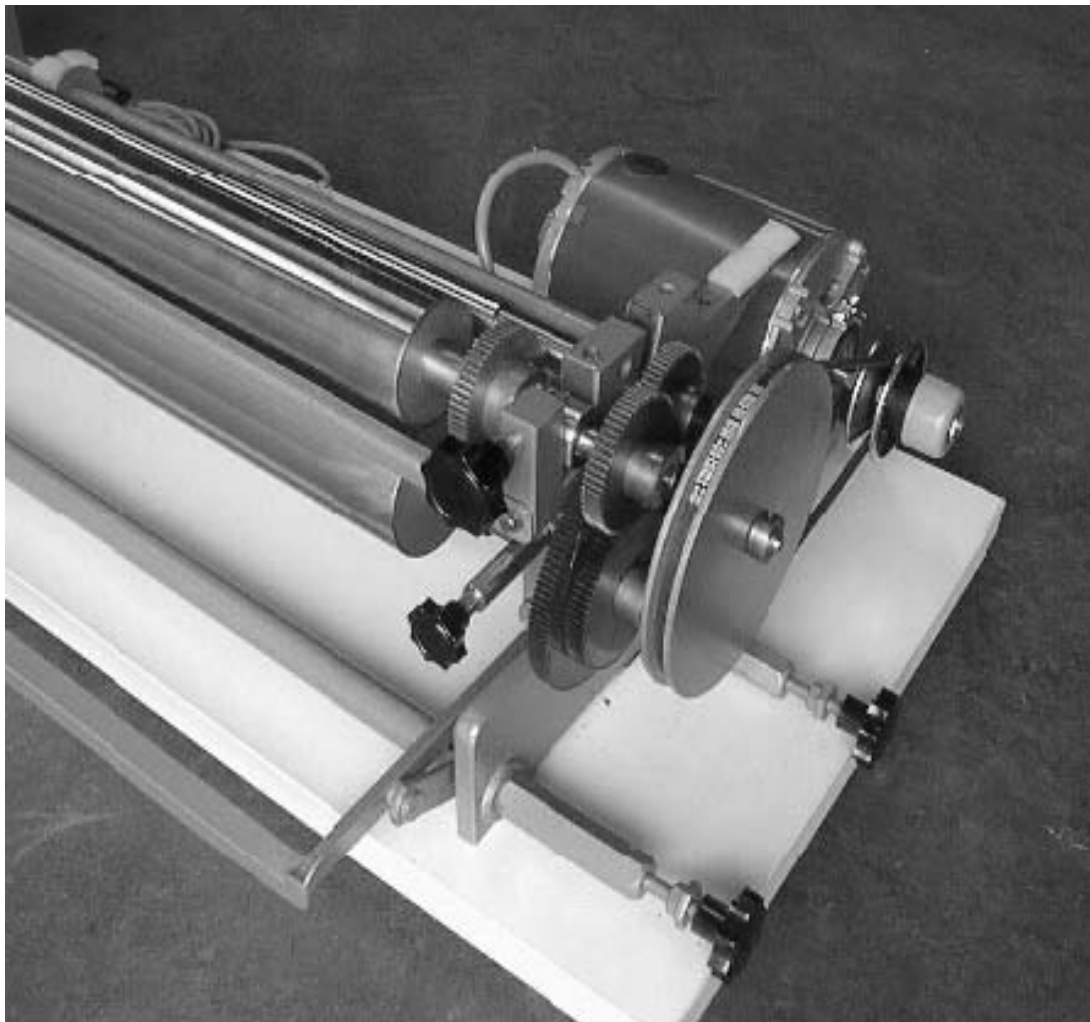
Re-assembly Tips

It was mentioned on page one that the points should all “meet” the label at the same time. By drawing a line on the Application Glue Roller and making certain that the Pick Off Points all fall on this line, you can insure that you will be ready to go to work without major adjustments. Each point has two sides for convenient use. If the points become dull the label may not be properly “peeled” from the roller. File to a sharp point or replace the dull points with new ones.



Pick-off Point Assembly

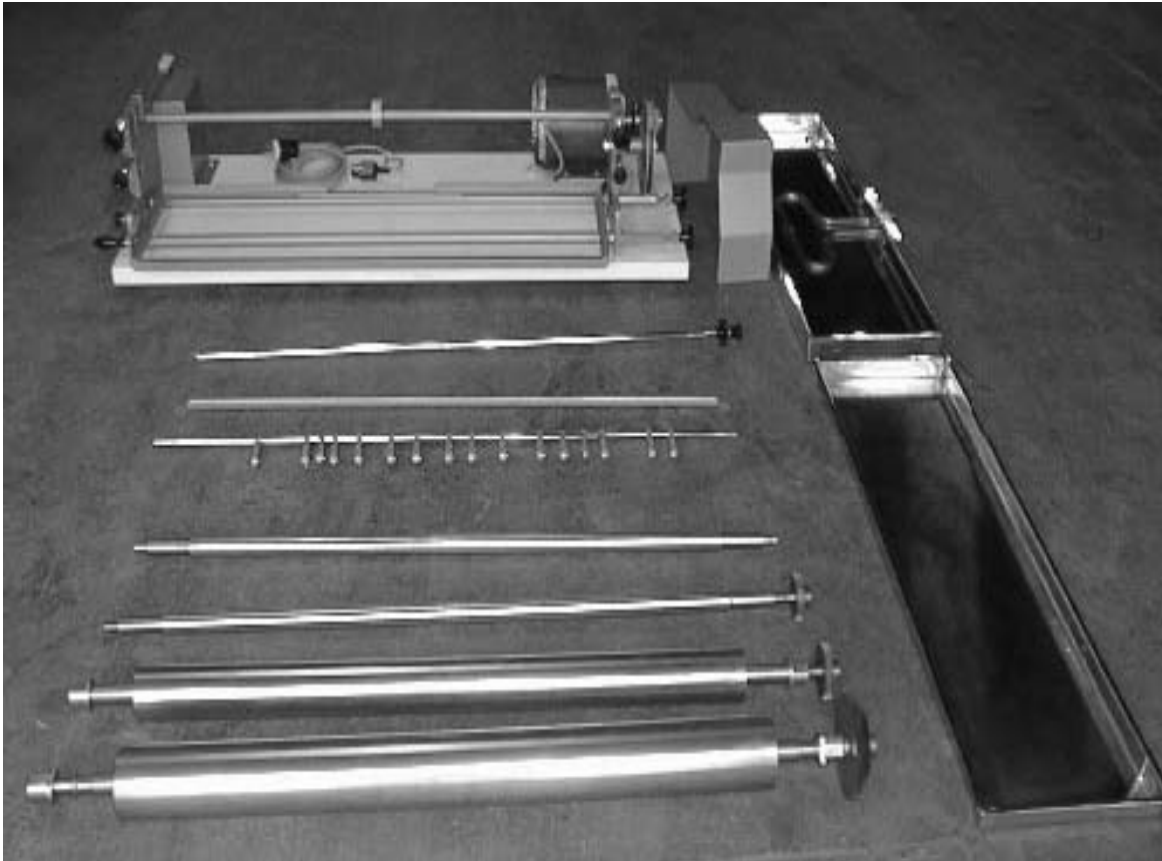
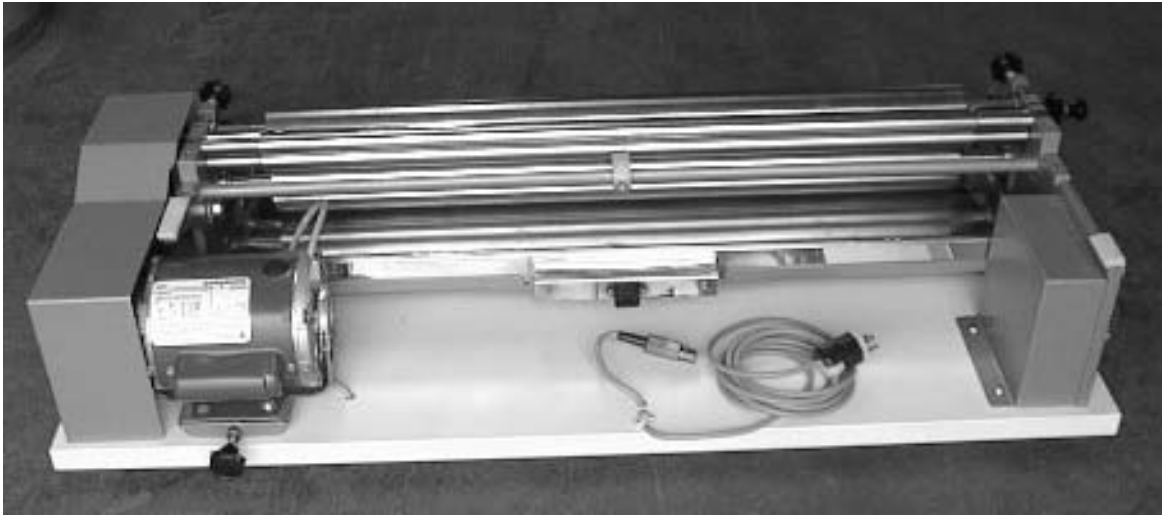
COLONEL ELECTRIC LABEL GLUER Photo #1
Photo #2





COLONEL ELECTRIC LABEL GLUER Photo #3

Photo #4





Adhesives & Applying Equipment

COLONEL ELECTRIC GLUER PARTS LIST

Page 1 of 2

PART NO. & DESCRIPTION

1-20	Top Feed Roller -20" Gluer (Gearless)
1-32	Top Feed Roller -32" Gluer (Gearless)
2-20	Bottom Feed Roller - 20" Gluer
2-32	Bottom Feed Roller - 32" Gluer
3	Bottom Feed Roller Gear (Approx. 2")
4	Gear Set Screw
5-20	Pressure Feed Rod - 20" Gluer
5-32	Pressure Feed Rod - 32" Gluer
6	Pressure Feed Rod Lock Knob
7	Stop Nut
8	Pressure Feed Adjustment Knob
9	Bushing (Double Faced)
10-20	Glue Application Roller - 20" Gluer
10-32	Glue Application Roller - 32" Gluer
11	Glue Control Roller Gear (Approx. 2.25")
12R	Right Bushing (Single Faced)
12L	Left Bushing (Single Faced)
13-20	Glue Pickup Roller - 20" Gluer
13-32	Glue Pickup Roller - 32" Gluer
14	Double Drive Gear (Single Unit)
15-20	Finger (Only) -20" Gluer
15-32	Finger (Only) -32" Gluer
15&16-20	Finger & Point Assembly with Screw - 20" Gluer
15&16-32	Finger & Point Assembly with Screw - 32" Gluer
16	Pick Off Point
17	Screw for Finger
18-20	Brass Finger Rod - 20" Gluer
18-32	Brass Finger Rod - 32" Gluer
19	Calrod Heater Ceramic Plug
19PC	Heater Cord
19A	Calrod Heater White Plastic Plug (Gluer's w/serial # starting "590" & up)
20	Power Plug
20PC	Power Cord
21	Motor -1/3 HP 115 volts AC
22	Variable Speed Pulley
22A	Fixed Pulley -3"
22B	Fixed Pulley -3.5"
23	Allen Screw
24	Motor Speed Control Mounting Plate with Knob
25&26	Motor Mounting Bolt & Washer
27	Drive Belt (3L270)
28	Flywheel Collar (Only)
28 & 29	Flywheel with Pinion Gear & Collar
30	Eccentric Shaft & Adjusting Nut



Adhesives & Applying Equipment

COLONEL ELECTRIC GLUER PARTS LIST

Page 2 of 2

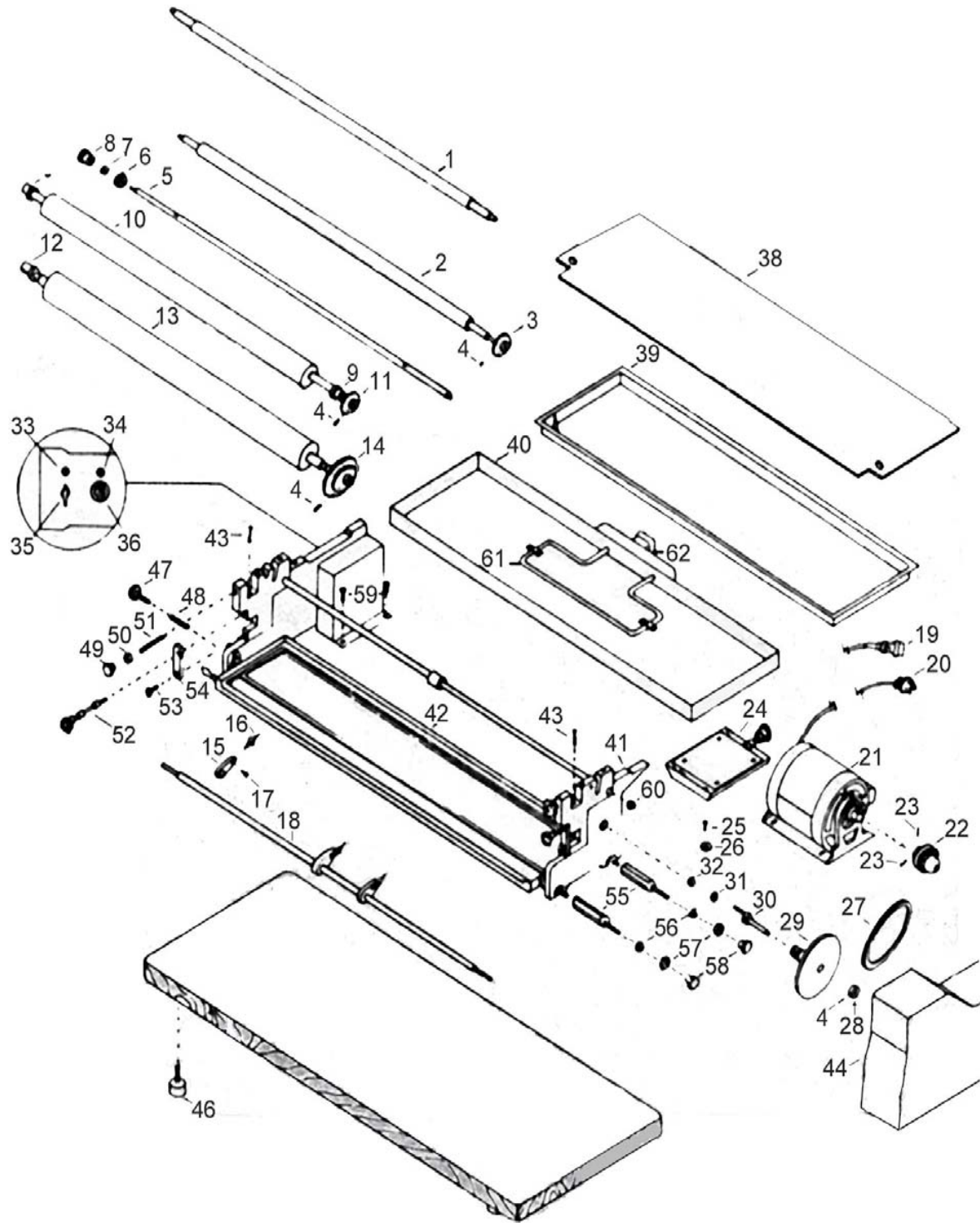
PART NO. & DESCRIPTION

31&32	Eccentric Shaft Washer & Locknut (part number 31 & 32)
33	Indicator Lamp for Motor
34	Indicator Lamp for Heater
35	On/Off Knob for Motor
36	Temperature Control Knob for Heater
Not Shown	Motor Switch
Not Shown	Temperature Control Switch, 115 Volts
37	Cover Knob
38-20	Standard Cover Plate - 20" Gluer (10.25" Depth)
38-20L	Large Cover Plate - 20" Gluer (19.5" Depth)
38-32	Standard Cover Plate - 32" Gluer (10.25" Depth)
38-32L	Large Cover Plate - 32" Gluer (19.5" Depth)
39-20	Glue Tray for 20" Gluer
39-32	Glue Tray for 32" Gluer
40-20	Calrod Heater & Hot Water Tray - 20" Gluer
40-32	Calrod Heater & Hot Water Tray - 32" Gluer
41-20	Main Frame with Support Crossbar & Hub - 20" Gluer
41-32	Main Frame with Support Crossbar & Hub - 32" Gluer
42-20	Glue Tray Platform with handle - 20" Gluer
42-32	Glue Tray Platform with handle - 32" Gluer
43	Tension Spring for Glue Application Roller
44	Drive Guard Cover
45-20	Wood Platform Base for 20" Gluer
45-32	Wood Platform Base for 32" Gluer
46	Platform Foot Support
47	Glue Tray Positioning Knob
48	Pressure Spring & Ball Bearing
49,50, & 51	Glue Control Knob, Locknut & Tapered Shaft
52	Finger Rod Mounting Knob & Support
53	Bushing Cover Bolt
54	Bushing Retention Plate
55	Drive Guard Cover Support Posts
56 & 57	Guard Limit Locknut & Support Plate
58	Drive Guard Cover Knob
59	Switch Cover Mounting Screw
60	Cross Bar Mounting Nut
61	Calrod Heater Element (without Male Connector), 110 volts
62	Male Connector for Calrod Heater Plug (Ceramic - Part# 19)
62A	Male Connector for Calrod Heater Plug (White Plastic - Part # 19A)
Not Shown	Roller Guard for 20" Gluer
Not Shown	Roller Guard for 32" Gluer
Not Shown	Screw and Washer for Roller Guard for 32" Colonel (part no. 10AS-COL)

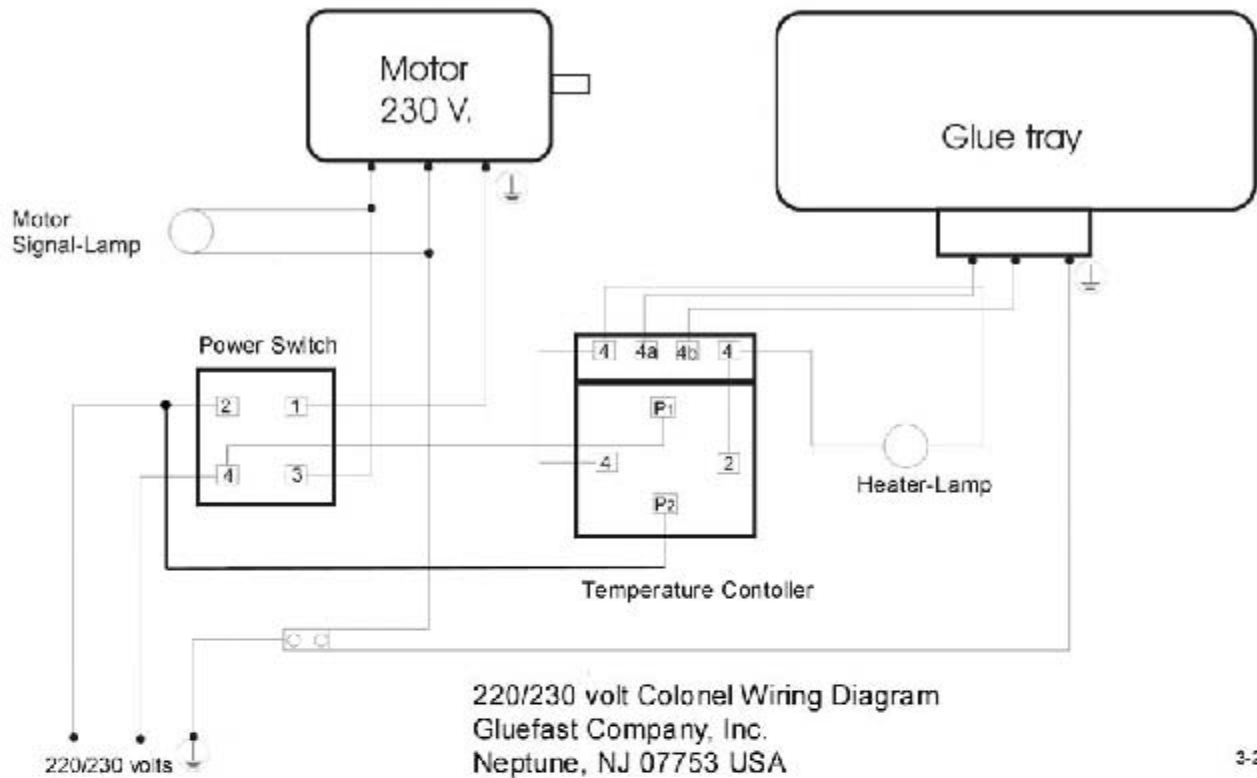


COLONEL SCHEMATIC

Includes Optional Heated Glue Tray 220/230 volts



Colonel Electrical Schematic



3-2010

GE Motors

5KC36LN19JT

1/4	50
110/220	1
1425	N
5.60/2.80	1.35
6.20/3.10	48
40 C	B
CONT	

CAT NO C460

RLJ290048

A-C MOTOR
THERMALLY PROTECTED

STK NO: C460

- WARNING -

TERMINAL COVER MUST BE IN PLACE FOR SAFE OPERATION. GROUND IN ACCORDANCE WITH LOCAL & NATIONAL ELECTRICAL CODES. KEEP FINGERS & OBJECTS AWAY FROM OPENINGS & ROTATING PARTS. DISCONNECT POWER SOURCES BEFORE TOUCHING INTERNAL PARTS.

VOLTAGE CONNECTIONS		
LEAD	LOW VOLT	HIGH VOLT
BROWN	5	4
WHITE	2	5
RED	5	5
BLACK	A	A

CCW ROTATION AS SHOWN. TO REVERSE ROTATION INTERCHANGE BLACK & RED

PACK: _____ ACCESSORIES:

PERMANENTLY LUBRICATED BALL BEARINGS. RELUBRICATION NOT REQUIRED

Assembled in MEXICO